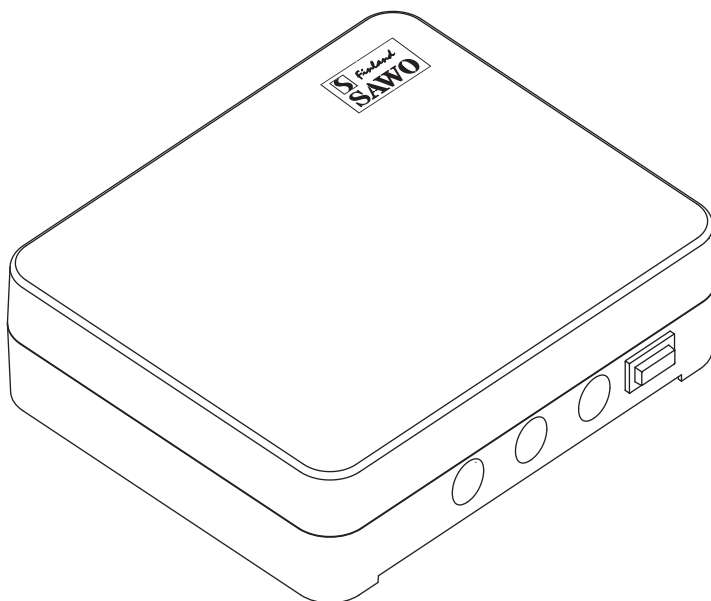




# MANUAL

## SAUNOVA 2.0 CONTACTOR UNIT

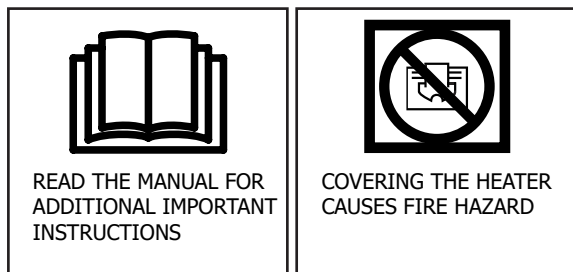


Not for use in the USA, Canada and Mexico.

ENGLISH

## TABLE OF CONTENTS

Introduction of the Saunova 2.0 Control .....	3
Precautions .....	3
Technical Diagram .....	4
Contactor Unit.....	6
The Control Unit Main Switch.....	7



## INTRODUCTION OF THE SAUNOVA 2.0 CONTROL

Congratulations on your purchase of Saunova 2.0 Control Unit!

Saunova 2.0 Control Unit is developed to enhance your sauna bathing with a variety of different features. It can adjust temperature, humidity, ventilation and light in your sauna.

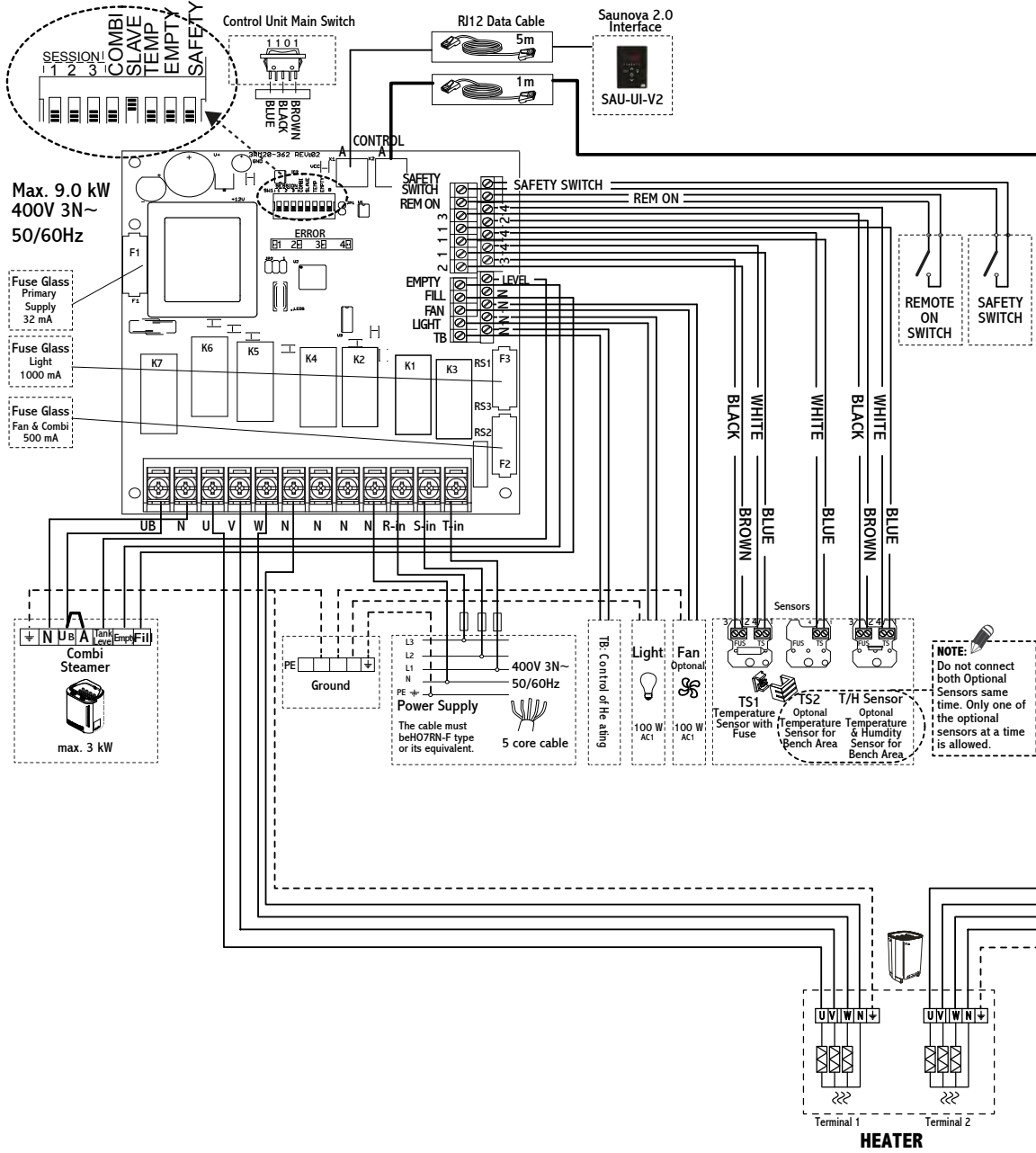
The following information provides you with instructions on adjusting the settings of the control unit. Please, read this instruction manual carefully before using it. Familiarization of key functions will give you a more enjoyable sauna experience.

### Precautions

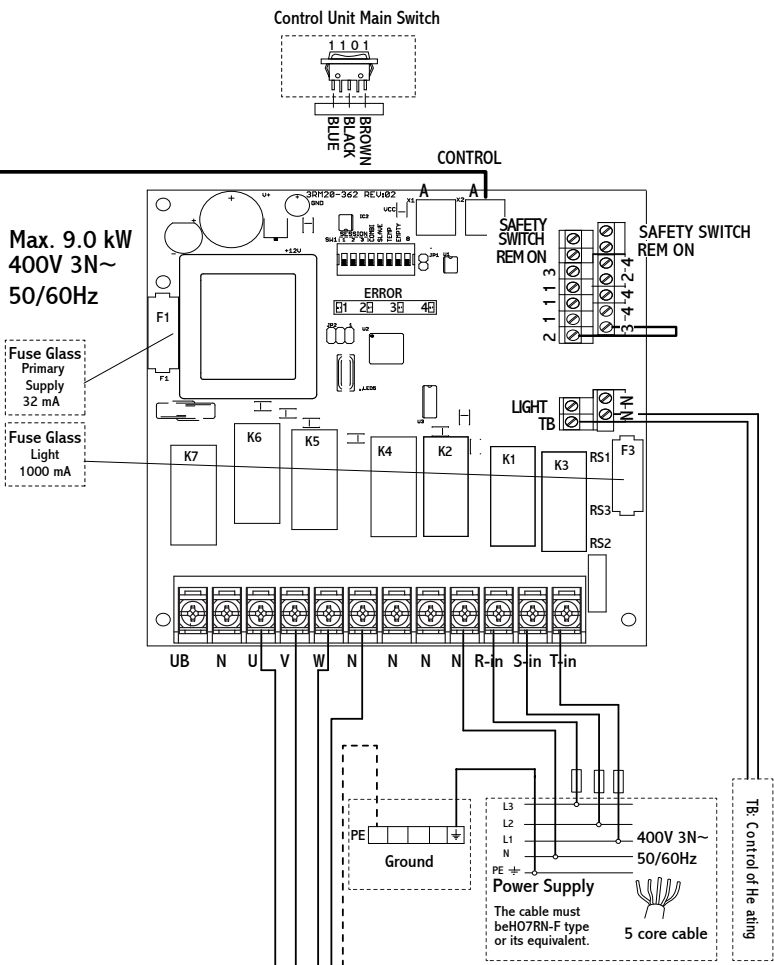
1. Only a qualified electrician is allowed to make electrical connections and repairs on the unit. Use original parts only.
2. Disconnect the Power Controller and the Contactor Unit from the electrical circuit before installation, opening the lid of the power controller or contactor unit and repair.
3. Check power supply rating before installation.
4. Check the correct location of the sensor in the installation section of the manual. It is very important to place the temperature sensor correctly as it closeness to the air ventilation cools down the sensor and may lead to overheating.
5. The power controller can be operated in a room temperature 0-40°C. Do not install it inside the sauna room!
6. Do not pour water in the control unit or clean it wet cloth. For cleaning purposes, use a cleaning cloth that has been only slightly moistened with a mild soapy solvent (dish detergent).

Fig. 1

Power Controller



Contactor



## Contactor Unit

If the heater used is more than 9 kW, an additional contactor is needed. The contactor unit is linked to the main Power Controller with a RJ12 cable (Fig.2).

Follow the instructions that are supplied together with the contactor unit.

Fig. 2 Installation of separate control panel with power controller and contactor unit

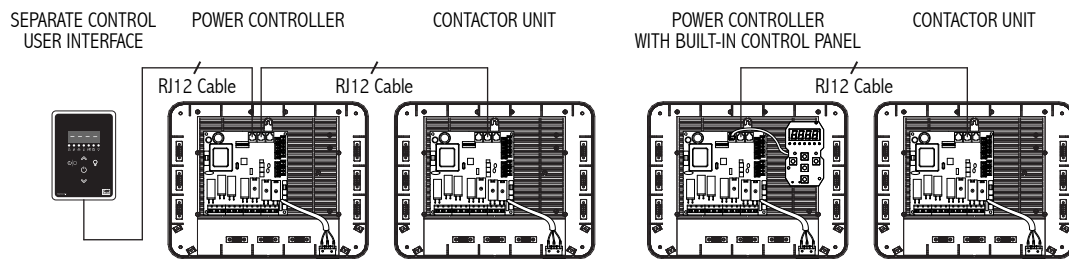


Fig. 3

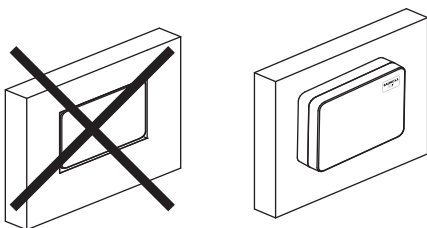
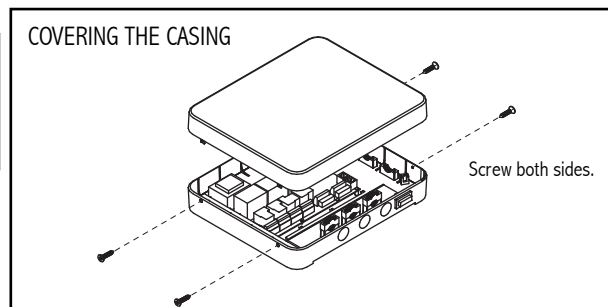


Fig. 4



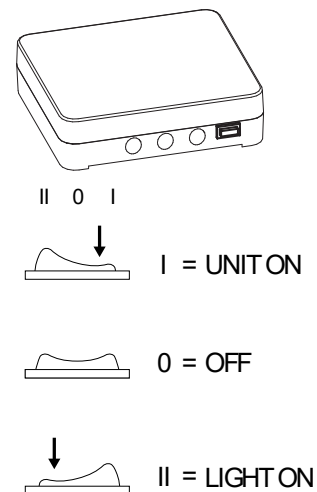
### WARNING



Do not embed the control unit into the wall, because it may lead to overheating of the unit and cause damage!

## The Control Unit Main Switch

The control unit switch can be found on the right bottom of the unit. Using this switch, you can isolate the electronics from the mains power supply.



CE UK CA IPX 4 EAC  T40 

Subject to change without notice.



[www.sawo.com](http://www.sawo.com) | [info@sawo.com](mailto:info@sawo.com)